



Waikaretu School

Continuously Thrive and Learn

www.waikaretu.school.nz admin@waikaretu.school.nz 09 2333014

Fortnightly Newsletter - Paanui

1448 WAIKARETU VALLEY ROAD
09 233 3014

WWW.WAIKARETU.SCHOOL.NZ

Kia ora koutou,

At Waikaretu School we continuously learn; this is true for our students but also for our teachers and Principal. As part of our commitment to providing the very best opportunities for our students and community, I will be attending the National Rural School Principals' Conference in Auckland this week. This year's conference will focus on strengthening rural school education, student wellbeing, innovative teaching practices, leadership, and building strong community connections that support the current changes in the educational landscape. I look forward to bringing back fresh ideas, practical strategies, and valuable insights that will continue to support the growth and success of our school.

Last week, our year 4 to 8 students attended the Senior Winter Sports at the Te Akau Complex. It's such an engaging way for our students to connect with other students from rural schools and to have an opportunity to be part of a larger sports team.

For the William Pike Challenge, Poohutukawa room went to the Nikau Caves. Its purpose is to prepare students for the challenges of life by pushing them outside their comfort zones through three core components:

- Outdoor Activities: Participating in new, challenging outdoor experiences.
- Community Service: Giving back to others and developing empathy.
- Life Skills: Learning practical skills that foster independence and problem-solving

Koowhai room will be going to the Hamilton Zoo in a week's time. This trip is a fantastic opportunity for our students to bring their learning to life, explore different animal habitats, and discover the importance of wildlife conservation.

Mid-Term 2 is also a check-in of how students are progressing, where their learning gaps may be and how we can support them for the rest of the year. This is a good time to talk to your child and see what learning goals they want to set and how they could go about this.

Although I do need some water in my tank, I am enjoying the crisp, dry, sunny days; I trust you do too. Keep well everyone!

Ngaa manaakitanga,

Bernie Denton-van Loon
Principal / Tumuaki



PHOTOLIFE

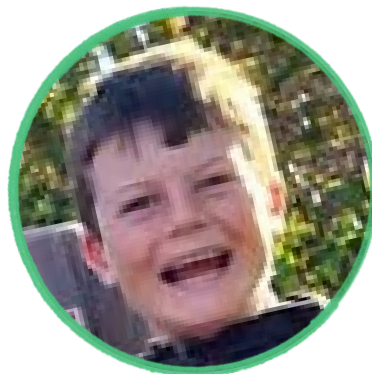
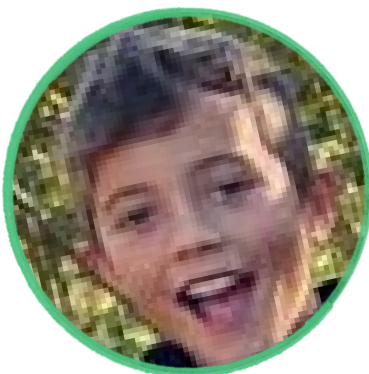
Student photos are now live and ready to view and order.

Keycodes will be sent via email. As this is a new system, please check your junk, spam, or promotions folders, in case the message was filtered.

Free delivery applies to orders placed before midnight on Sunday, 14 June 2026.



Mac who turns 10 on the 1st of June and Jack who will celebrate his 9th birthday on the 8th of June.



IMPORTANT DATES

**Tuesday 2nd June
Year 7/8 Technology Huntly**

**Thursday 4th June
Koowhai Room trip to
Hamilton Zoo**

**Wednesday 17th June
Year 3-8 Junior Tough Guy
and Gal Challenge**

**Monday 15th June and
Thursday 18th June
Three-way conferences**

**Friday 3rd July
School Term 2 ends**



Friday Pie Day

Every Friday we will heat up any food the children bring (pies, sausage rolls, toasted sandwiches etc) for lunch in the pie warmer. Please let them know to give their wrapped (not clingfilm) named food to a teacher in the morning.



WAIKARETU PLAYGROUP

Bring your Tamariki along for a play. Have a chat and coffee and make lasting connections with the other mothers/caregivers and the school. Please contact Catherine Hore 021 113 7770

Community Notices



Last week we heard from Erica that Denise is very happy in Te Anau - Here she is in the communal garden that she volunteers at; her happy place. We miss her but we know that she is doing what she loves.

See the last page of our newsletter for our sponsors and their services.

Poohutukawa Room Caving Trip

On Thursday 14th May the Year 4-8 students were fortunate enough to venture to the Nikau Caves as part of the William Pike Challenge they are taking part in this year. The challenge is all about pushing themselves out of their comfort zone and the Nikau Caves are a fantastic way to do this. With their trusty guides, the students clambered through water, over rocks and through tight spaces to enjoy the beautiful formations, including stalactites and stalagmites. They were all proud of their achievements. We want to say a huge thank you to Cameron and Catherine for being our parent helpers on the day and to the team at Nikau Caves for providing such a great experience.



Year 4-8 Cluster Winter Sports



On Friday 22nd May, the Year 4-8 students attended the Interschool Winter Sports day at Te Akau Complex. The weather played its part and the students participated in football, rippa rugby, and netball. It was not only the skills of our students that shone through the day as they scored a goal or made a great pass. It was also the presence of our Wai Way Values in their actions on the field that made us proud! They showed kindness to others, participated bravely, and showed respect to their fellow players and referees. Ka pai to all! Thank you to the parents that helped transport students and offered fantastic support.



Assembly & Awards 18th May



Chip, Eli, Libby and Margo received the WAI Way assembly certificates.



The WAI Way prizes went to Sienna and Aria.



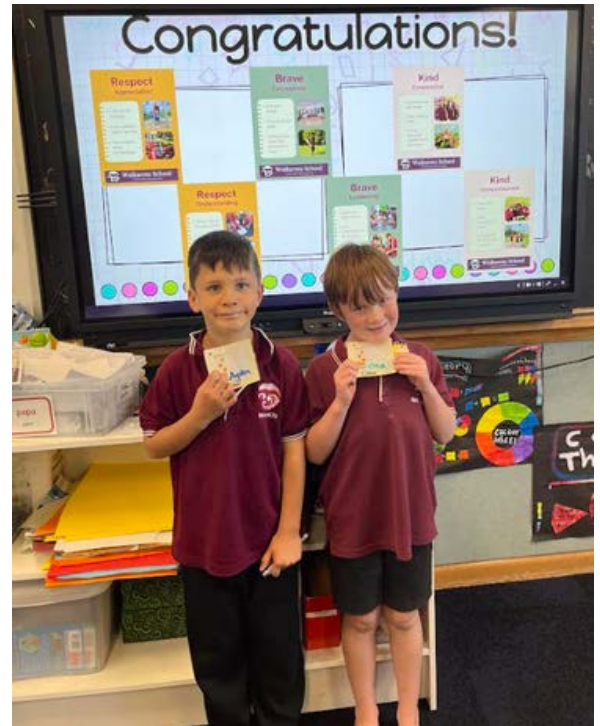
Last week we farewelled Teacher Dani van den Bemd with a shared morning tea. We wish her all the best for her new venture and thank her for all she has contributed.



Assembly & Awards 25th May



Mason received his WAI Way band.



The WAI Way prizes went to Ayden and Chip.



Ayla, Will, Levi and Mason received the WAI Way assembly certificates.

Brave Courageous

- I try new things
- I can share my ideas
- I stand up for those that don't have a voice

Garden to Table



With the autumn leaves falling it seems a great time to add a brown layer to our compost. The children had a lot of fun gathering the leaves and depositing them in to the boxes.

We talked about a composting competition we could join using a video or picture.

We also weeded some of the paths around the garden beds.



Erica and the cooking team harvested our kohlrabi plants grating them, along with spring onions, apples, mandarins, picked herbs and cracking walnuts and macadamia to add to a crispy, zesty salad.



GARDEN   
TO TABLE GROW,
HARVEST,
PREPARE,
SHARE

July Holiday Activities

Edventure Hamilton Holiday Programmes and Camp

Join us these school holidays for exciting activities, themed days, adventures, and unforgettable outdoor experiences! Including a week long outdoors based camp

Our Hamilton Holiday Programmes are based at Berkley School and offer a range of fun-filled activities to keep children engaged, active, and entertained throughout the holidays. Programmes from just \$55 per day, with OSCAR subsidies available.

Holiday Programmes include:

- Edventure Everyday
- Edventure Outdoors
- D&D workshops

We're also excited to be running our popular Edventure Outdoors Camp, based at Ngamuwahine Outdoor Education Centre, packed with adventure activities, teamwork, and outdoor fun. Transport pick-ups are available from both Hamilton and Tauranga.

Book now at www.edventure.co.nz

Locations:

- 📍 Berkley School - Hamilton
 - 📍 Ngamuwahine Outdoor Education Centre
- 🚌 Pick-ups available from Hamilton & Tauranga



Thank you to
our SkoolLoop
Sponsors

Please support our newsletter sponsors

A BIG Thank You to Ngahuia Thompson, our rural mail contractor who support us with the delivery of our school newsletter and so much more.
lisangahuia@yahoo.co.nz
Phone number 027 3973255



SALES · SERVICE · PARTS · ACCESSORIES

Kawasaki SUZUKI YAMAHA KTM

09 237 3095 | 5 STADIUM DR, PUKEKOHE
WWW.MRMOTORCYCLES.CO.NZ



NOR-WEST FENCING

Keith Marshall
027 317 4657 or 07 825 4458
nor-west@outlook.com



WAIKARETU, NZ

Mobile: 021 776 486
Emilywelch648@gmail.com

WAIKARETU NEW ZEALAND



TE KARAKA
STATION & LODGE

Open for lunch bookings!
Gift Vouchers available!

Stay@tekarakalodge.co.nz
09 242 9229
Open Wednesday to Sunday

Thank you 
Glen Murray
Community Association Inc.
for your continuing support of
Waikaretu School



**Counties
Energy**



For more info

 Don
 027 497 5825
 don@onroadtransport.nz



Nicky Ewen
0273188527 or 09 2333042
www.das.org.nz
E: nicole@das.org.nz
Bookkeeping support, GST, payroll, Fuel Excise, Duty Refunds



**TE AKAU
TRANSPORT
LIMITED**

Livestock - Fertiliser - Aglime - Metal - Animal Feed
07 825 4805 / 07 826 3666 office@teakautransport.nz

Counties Bulk Haulage Ltd

Bulk Cartage

Metal. Sand. Fertiliser. Lime

Bobcat Hire

Boyd: 0274978685

Email: countiesbulk@xtra.co.nz