

Our Mission & Vision:

Our mission is to continuously thrive and learn.
Waikaretu School empowers our learners to make connections to, from, and within our rural context. We support our students to develop the necessary knowledge and skills to become resilient, critical thinkers who actively participate in their education and who strive to be life-long learners.

2024 - 2026

School Charter



Waikaretu School

Continuously Thrive and Learn



Who we are:

Waikaretu School is a full primary school catering for years 1-8 in a beautiful and isolated setting in Northwestern Waikato. Our rural environment provides farming and tourism related opportunities for the community. We are connected to our local community and local iwi, Ngaati Tahinga; Tangata Whenua to Pukerewa Marae and Weraroa Marae.

Our Values:



Our Principles:

Waikaretu School Principles



Learners at the centre

Learners with their whānau are at the centre of education.

Barrier free access

Great educational opportunities and outcomes are within reach of every learner.

Quality teaching and leadership

Quality teaching and leadership make the difference for learners and their whānau.

Future of learning and work

Learning that is relevant to the lives of New Zealanders today and throughout their lives.

The Waikaretu School **Values** translate into the WAI Way:

At Waikaretu School we encourage children to strive to be kind, always aim to be brave and respectful, and to act as a kaitiaki to care for people, places, all living things, and all things of personal and shared value.

We implement Positive Behaviour for Learning (PB4L) strategies to encourage our students to use our values at school, in our community and beyond.



 **Waikaretu Way**

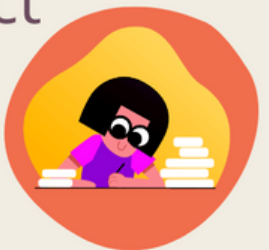
We strive to be kind



Always be brave



I show respect



As a kaitiaki,
I play my part.

THE WAIKARETU WAY

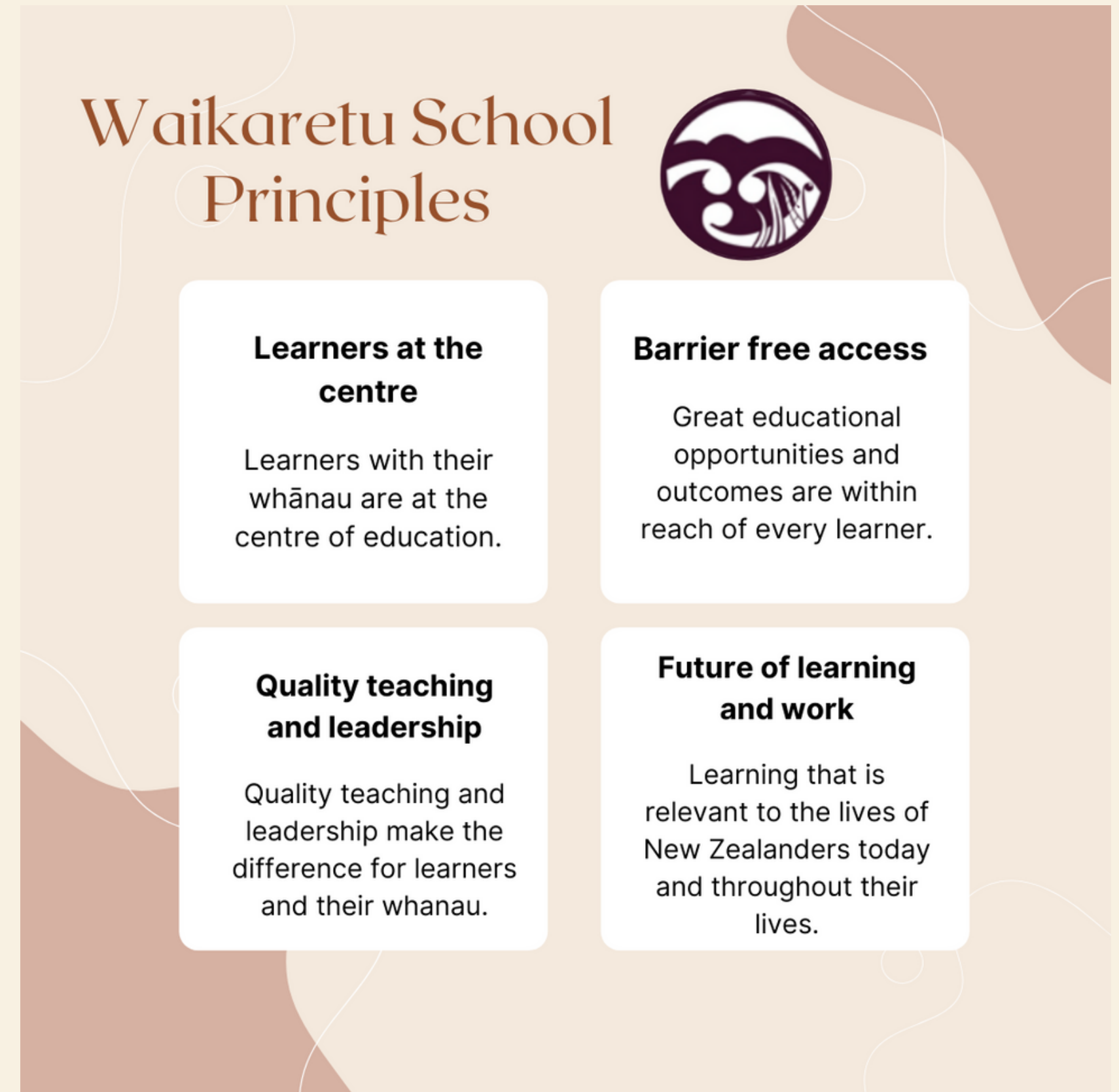


WAIKARETU SCHOOL
Continuously Thrive and Learn

At Waikaretu School we implement **The Statement of National Education and Learning Priorities (NELP)** which are embedded in our school principles:

The objectives for education set the context for the NELP and outline the things the Government will focus on to improve outcomes and wellbeing across the education system:

1. Learners at the centre – Learners with their whānau are at the centre of education.
2. Barrier-free access – Great education opportunities and outcomes are within reach for every learner.
3. Quality teaching and leadership – Quality teaching and leadership make the difference for learners and their whānau.
4. Future of learning and work – Learning that is relevant to the lives of New Zealanders today and throughout their lives.
5. World-class inclusive public education – New Zealand education is trusted and sustainable.



NZ Curriculum

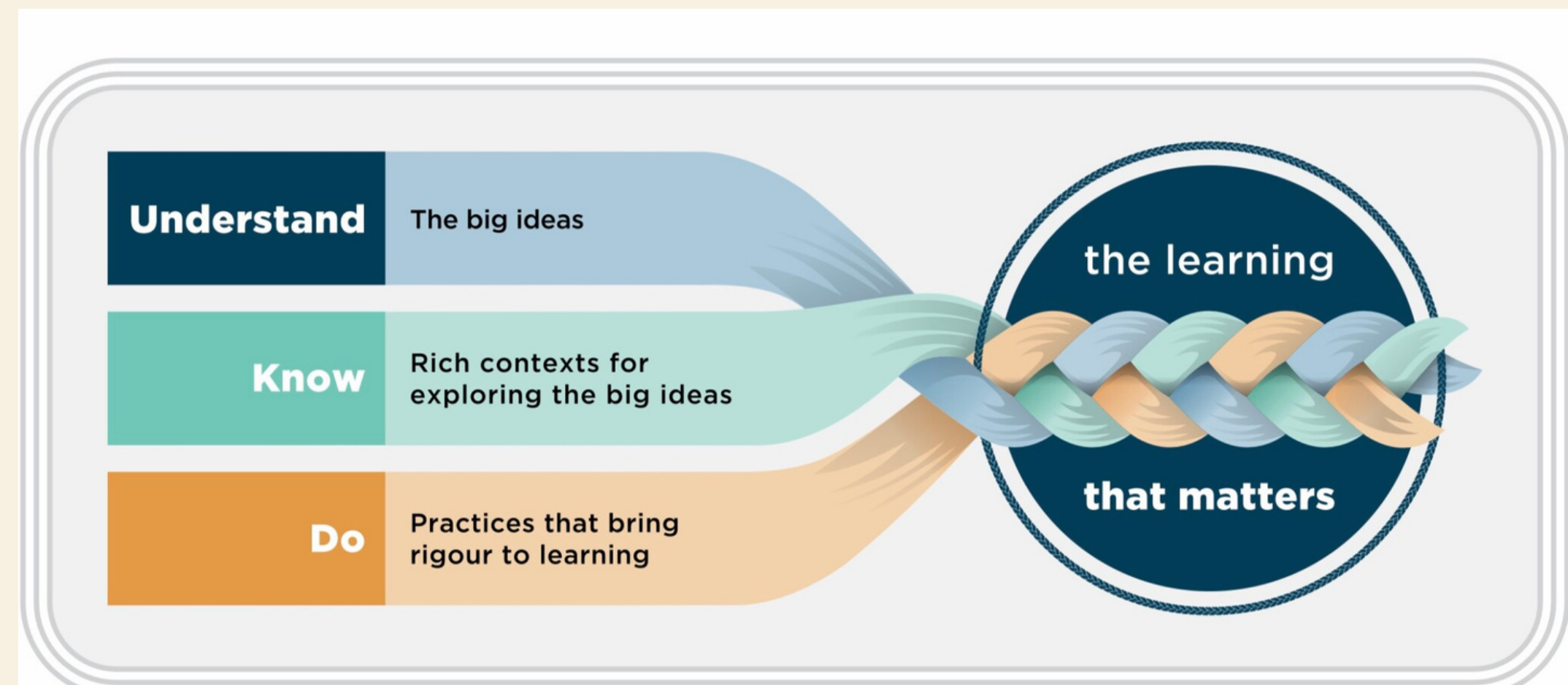
Our teachers implement teaching and learning tasks that are underpinned by the New Zealand Curriculum. Waikaretu School is at the start of implementing the Refreshed Curriculum. Schools and kura must use the refreshed mathematics and statistics and English learning areas from the start of 2025. Teachers at Waikaretu School have been implementing the New Zealand Histories Curriculum since 2023. The refreshed curriculum content is being developed and released in phases, and schools and kura will have until the beginning of 2027 to start using the fully refreshed curriculum.

Te Maataiaho | the refreshed curriculum will support students to experience success in their learning. It will give practical effect to Te Tiriti o Waitangi, and will be inclusive and clear about the learning that matters.

There are three elements to the refreshed curriculum:

UNDERSTAND, KNOW, and DO.

At Waikaretu School, teachers design learning experiences that weave these elements together so the student learning is deep and meaningful.



Waikaretu School gives effect to the **Treaty of Waitangi** by following The Poutama Reo Framework.

The Poutama Reo framework is a self-evaluation tool to support improvement in te reo Maaori provision in English-medium schools.

The framework was informed by the voices of learners, whānau, educators and leaders in English-medium schools and provides clarity and clear next steps on how to build upon what we have in place to maximise impact.

This is an evolving document and gives us feedback and feedforward as a school community to support our students to learn Te Reo and Tikanga Maaori.

The framework helps our school explore key focus areas:

- leadership,
- whānau, hapū and iwi relationships
- student agency
- teaching and learning.

As we proceed with using the framework, we will discover indicators and examples of effective practice to support us and our school's goals.

We currently work in partnership with our local Kaumatua (Ngaati Tahinga) from our local Weraroa Marae to engage our students in local te reo Maaori and tikanga.



Alongside The Poutama Reo framework, Waikaretu School is also developing leadership knowledge and local curriculum knowledge for our teaching staff through PLD within the local Too Taatou Haerenga Kaahui Ako (Waikato-Tainui informed). Our Kaahui Ako consists of Waikaretu School, Te Kauwhata Primary School, Te Kauwhata College, Kimihia School, Ohinewai School and Te Paina School.

At Waikaretu School we are dedicated to implementing Te Maataiaho | the refreshed curriculum will support students to experience success in their learning. It will give practical effect to Te Tiriti o Waitangi, and will be inclusive over the next few years.

All the above, gives our students, including Maaori students, an opportunity to achieve their learning goals within our local context.

STRATEGIC PLANNING

Strategic & Annual Aims 2024-2026



01 Strategic Aim

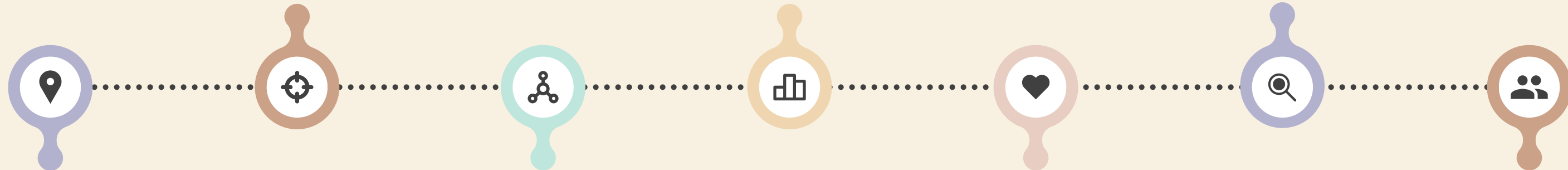
To implement deliberate actions to increase student achievement and attain equitable outcomes for all students in literacy and mathematics.

02 Strategic Aim

To extend reciprocal learning-centred partnerships between school and whaanau that improve student attendance and student achievement outcomes.

03 Strategic Aim

To further strengthen collaborative internal evaluation practices to create sustainability and continuous professional improvement.



01 Annual Aim

To lift student achievement in writing. We aim for students to be at or above cohort from 59% to 70% or from 15 out of 25 students to 18 out of 25 students.

02 Annual Aim

To strengthen the reciprocal home-school relationship by sharing information and resources to support student attendance and student learning outcomes.

03 Annual Aim

To use collaborative approaches to collect and analyse data, to reflect on practice, and to share professional knowledge with a focus on writing and Te Reo Maaori / Local Tikanga.

04 Annual Aim

Identify whaanau aspirations to build on community relationships that will enable teachers to identify and support students' needs, interests and cultural values.

Which Board Primary Objective do the Waikaretu School Strategic Aims 2024-2026 work towards meeting and which NELP is embedded?

(section 127 of the Education and Training Act 2020).

01

Strategic Aim

To implement deliberate actions to increase student achievement and attain equitable outcomes for all students in literacy and mathematics.

02

Strategic Aim

To extend reciprocal learning-centred partnerships between school and whaanau that improve student attendance and student achievement outcomes.

03

Strategic Aim

To further strengthen collaborative internal evaluation practices to create sustainability and continuous professional improvement.

1.c the school is inclusive of, and caters for, students with differing needs

1.d (iii) the school gives effect to Te Tiriti o Waitangi, including by achieving equitable outcomes for Maaori students

NELP 2.3

Reduce barriers to education for all, including for Maaori and Pacific learners/aakonga, disabled learners/aakonga and those with learning support needs

NELP 2.4

Ensure every learner/aakonga gains sound foundation skills, including language, literacy and numeracy

1.a every student at the school is able to attain their highest possible standard in educational achievement

1.d (i) the school is working to ensure that its plans, policies, and local curriculum reflect local tikanga Maaori, Maatauranga Maaori, and te ao Maaori

NELP 1.2

Have high aspirations for every learner/aakonga, and support these by partnering with their whaanau and communities to design and deliver education that responds to their needs, and sustains their identities, languages and cultures

1.c the school is inclusive of, and caters for, students with differing needs

1.b (i) the school is a physically and emotionally safe place for all students and staff

NELP 3.6

Quality Teaching & Leadership - Develop staff to strengthen teaching, leadership and learner support capability across the education workforce

Developing a schoolwide progressive Maaori language plan with whaanau, hapuu and iwi.

2024-2026

Raising achievement for all students not achieving at expectation, including Maaori students and students with diverse needs.



EDUCATIONAL PRIORITIES



Waikaretu School

Continuously Thrive and Learn

Developing a sense of belonging and identity through local curriculum and school values.

Strategic Planning for Other Key Areas for 2024 - 2026

01

Continue to develop outdoor learning spaces.

02

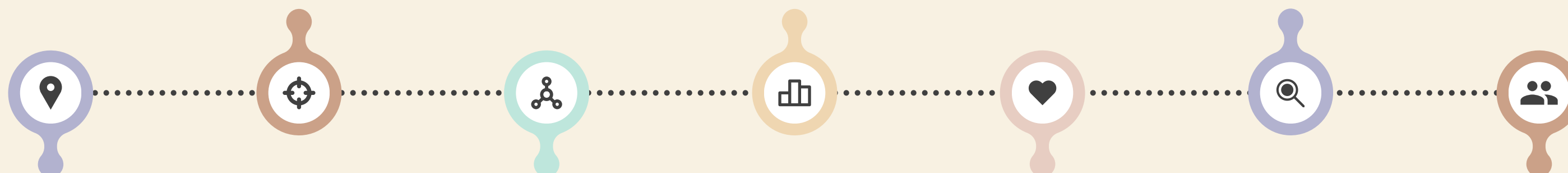
Create property spaces to store learning resources appropriately and securely.

03

Strengthen and further develop community connections to support learners and our school.

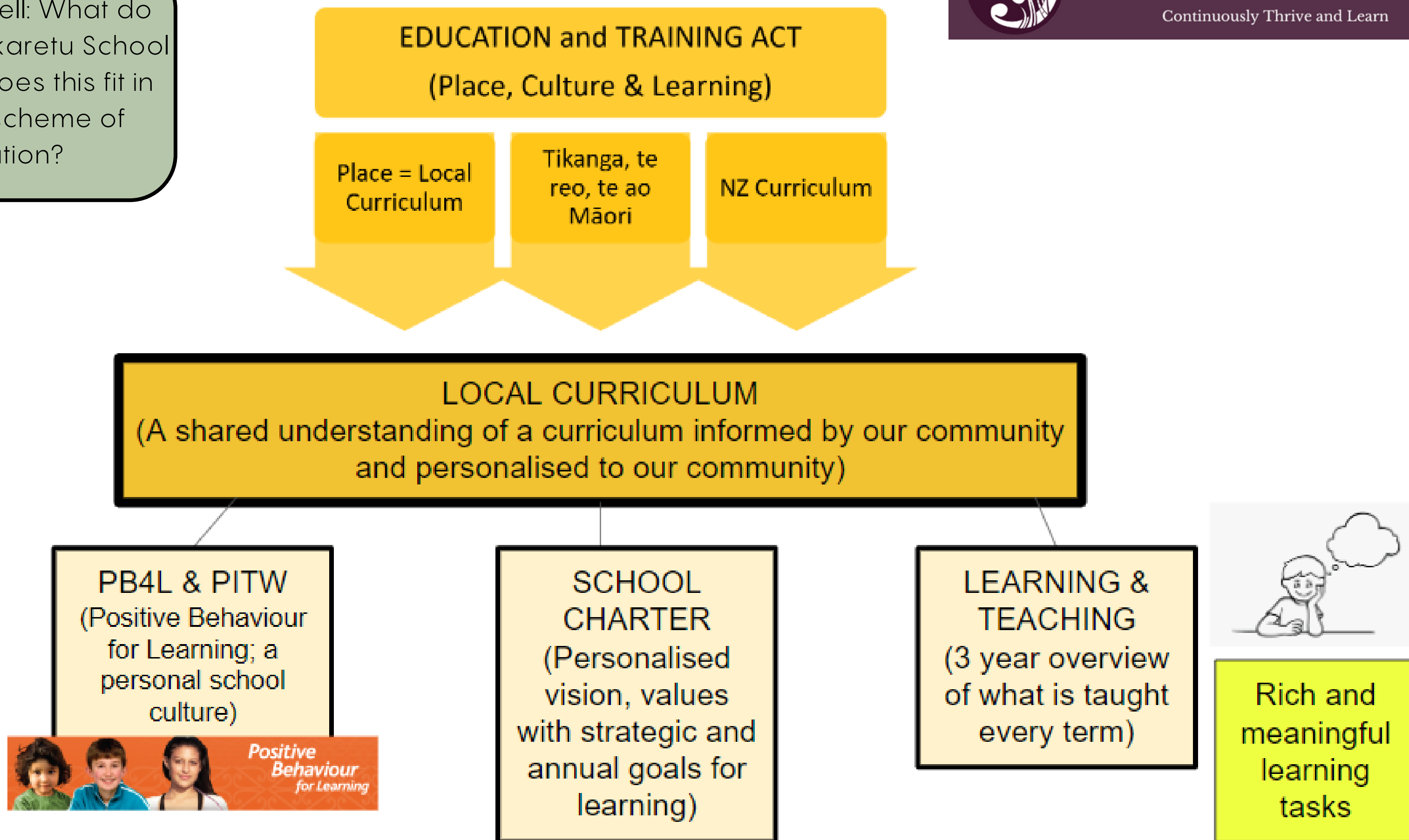
04

Develop effective marketing tools to promote and sustain student roll growth.





So, in a nutshell: What do we do at Waikaretu School and where does this fit in the grand scheme of education?



What do we expect to see?
What is the result of a successful completion of our strategic aims, annual aims and objectives?

Through the NELPs, The New Zealand Curriculum, the Key Competencies and our school values, we aim for our students at Waikaretu School to be confident about who they are, to be positively connected to people and places, to actively involve themselves in everything they do and to sustain a thirst for life long learning.

This is also reflected in the student assessment data we gather, data analysis and evaluation to continuously improve our practice and to inform future strategic and annual aims.

